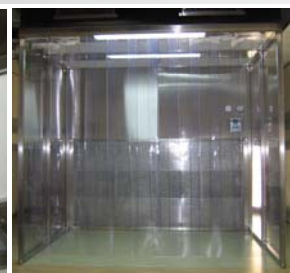
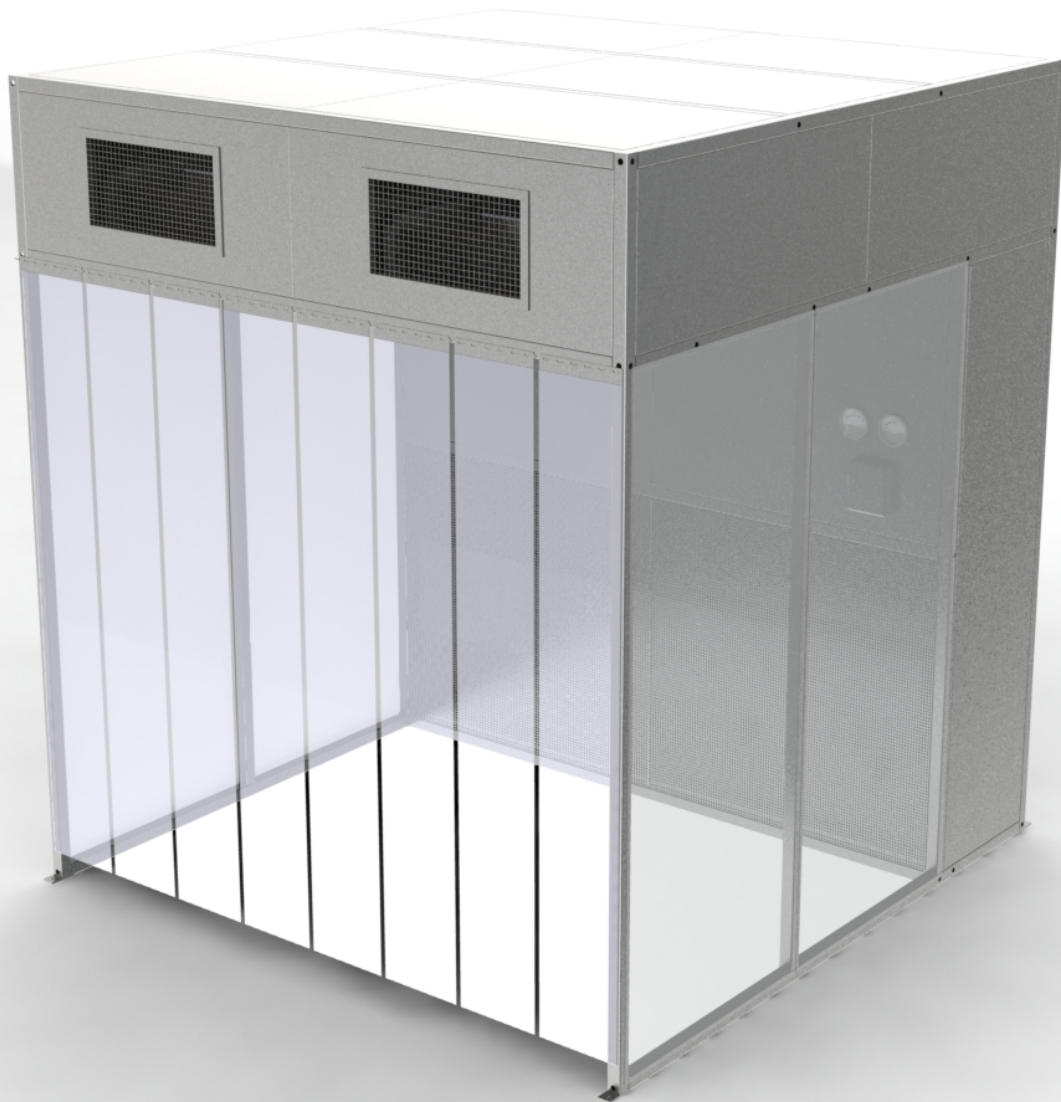


Downflow Containment Booth

Drum Weigh / Inspection / Isolation



High Quality
Rapid Delivery
Competative pricing
Customized design & materials

Powered by  **Cleanrooms**



Down Flow Containment / Isolation Solutions

The hi quality down flow containment structures are intended for organisations that need to create a containment booth, providing process isolation and personnel protection involving processes with powders and liquids. We supply according to the relevant quality standard and within an acceptable time frame and budget.

The downflow booth offers a GMP / ISO working area with contained airflow to protect your processes and personnel. The construction is very robust and allows for easy cleaning.

Welcome to ProCleanroom

ProCleanroom, active as official partner and representation of Connect2Cleanrooms Ltd., specializes in modular cleanroom solutions & downflow cabinets. It is our common goal to exceed our customer's expectations by providing a reliable, high-quality product with a first class service and on-going customer support.

Our project engineers are experts in assessing and managing client's needs and with in-house consultancy, CAD facilities, installation and validation engineers and end user training we offer everything you would need for a comprehensive turnkey service, from concept to completion From Blue Chip companies to small start ups; we have the solution for you.

High quality design

The Connect2Cleanrooms clean enclosures are well designed, portable and relatively easy to assemble/disassemble. They come with freestanding or floor mounted powder coated mild steel or 304 / 316 grade stainless steel frame, combined with transparent PETg, RAL coated or stainless steel panels. Air filtering is offered through variable speed controlled HEPA or ULPA fan filter units. Utilities and services can be fitted upon request. Robust panels are fitted for easy access to maintenance area's and also to protect the exposed filter media.

All filters are individually challenged. Electrical wiring according to CE standard. General unit performance according to ISO 14644 part 1.

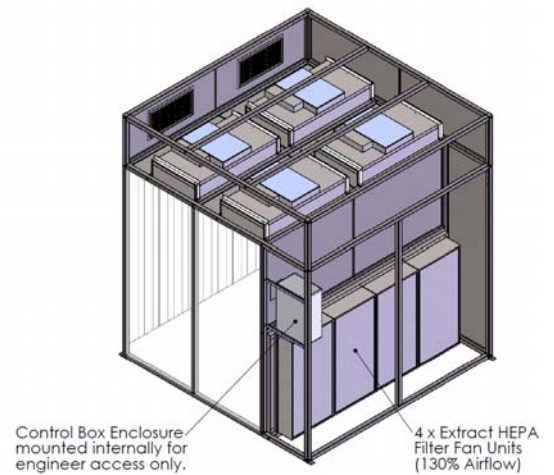


Fig1. 2.65 x 2.65 m - backside with panels removed

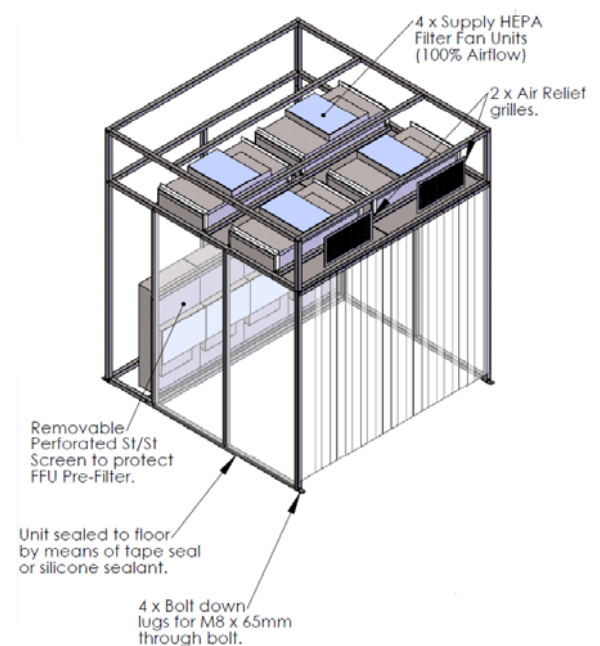


Fig2. 2.65 x 2.65 m front side with panels removed



Electrical

- ⌘ Main switch with isolator: 230VAC, 50Hz.
- ⌘ Separate light switching
- ⌘ Flush mounted fluorescent or LED lights
- ⌘ Utility / Auxillary switching
- ⌘ Analogue or digital Pressure Sensors
- ⌘ Alarm outputs
- ⌘ Analogue Triac or intelligent speed controls

Main Features

- ⌘ Coated Mild or stainless steel construction
- ⌘ (anti-static) PVC strip curtain
- ⌘ Clear PETg side panels
- ⌘ Laminar downflow HEPA or ULPA filtration
- ⌘ Easy access to service areas
- ⌘ Advanced 'Green' ECO-1 controller option
- ⌘ Magnahelic pressure gauges
- ⌘ Various options available...



Air system

- ⌘ Individual integrated Fan Filter Units
- ⌘ HEPA or ULPA main filters
- ⌘ Snap in prefilters, easy to replace
- ⌘ Perforated steel protective panels
- ⌘ Unidirectional airflow
- ⌘ ca. 0.5 m/s air speed at filter surface
- ⌘ 2 years warranty

Various sizes

The containment booths are made to order within an unmatched timeframe of only 3 weeks after receipt of order

Typical working area sizes range from 1,5m² up to 9m² but can be larger.

Please contact us with your inquiry !

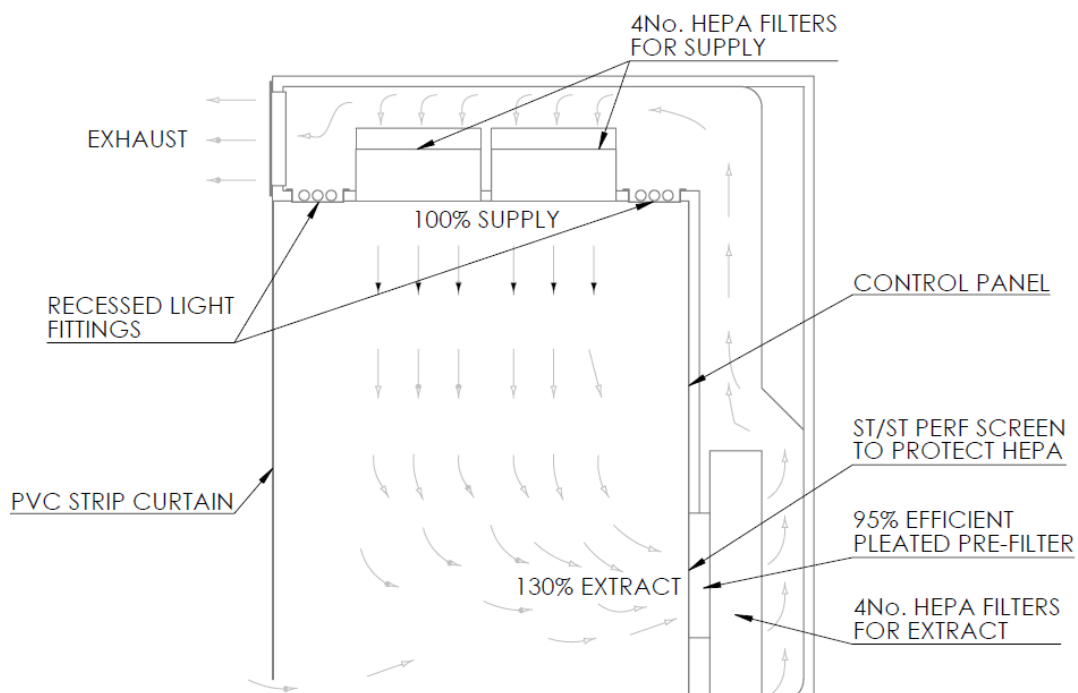


Fig3. Example of principle



Typical markets:

- ❖ Chemical
- ❖ Pharmaceutical
- ❖ Harsh industrial processes

Typical applications:

- ❖ Decanting, weighing and sampling of food additives, colour pigments, chemicals and pharmaceutical products and powders
- ❖ Sampling and handling of volatile liquids
- ❖ Containment of pharmaceutical or process systems
- ❖ Containment of industrial processes involving dust shedding

Related products:

- ❖ Modular cleanroom solutions
- ❖ Laminar Flow Unit (small benchtop and freestanding)

Check our website for additional information



Heistraat 64
5554 ER Valkenswaard
The Netherlands

Tel. +31 (0)40 20 469 31
Fax. +31 (0)40 20 139 81

www.procleanroom.eu
info@procleanroom.eu